

**EPOINT SYSTEMS**

# POS SYSTEM

## MODEL AUDREY A5-I-E



Intel Celeron J6412 (Elkhart Lake)

DDR4 8GB RAM Memory

128G SSD Storage

15.6" PCAP touch

Windows 10 O.S. Compliant



Guest Facing Display is available



Different levels of Hardware Configuration for various user demands



Adjustable peripherals based on requirements



Fanless design but always kept cool



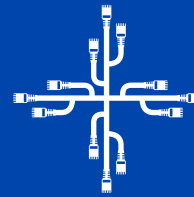
Neat outer appearance with cable management



Excellent user experience and service efficiency



Various Display Support Options:  
Main Display  
VGA  
HDMI

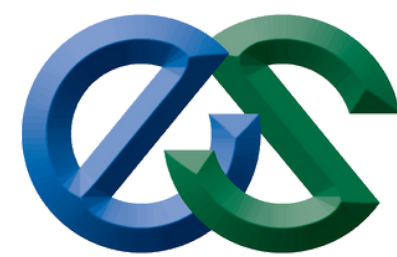


Optional Peripherals can be added on such as :  
MSR  
RFID  
Access Cards and more

**WE MAKE IT POSSIBLE !!!**



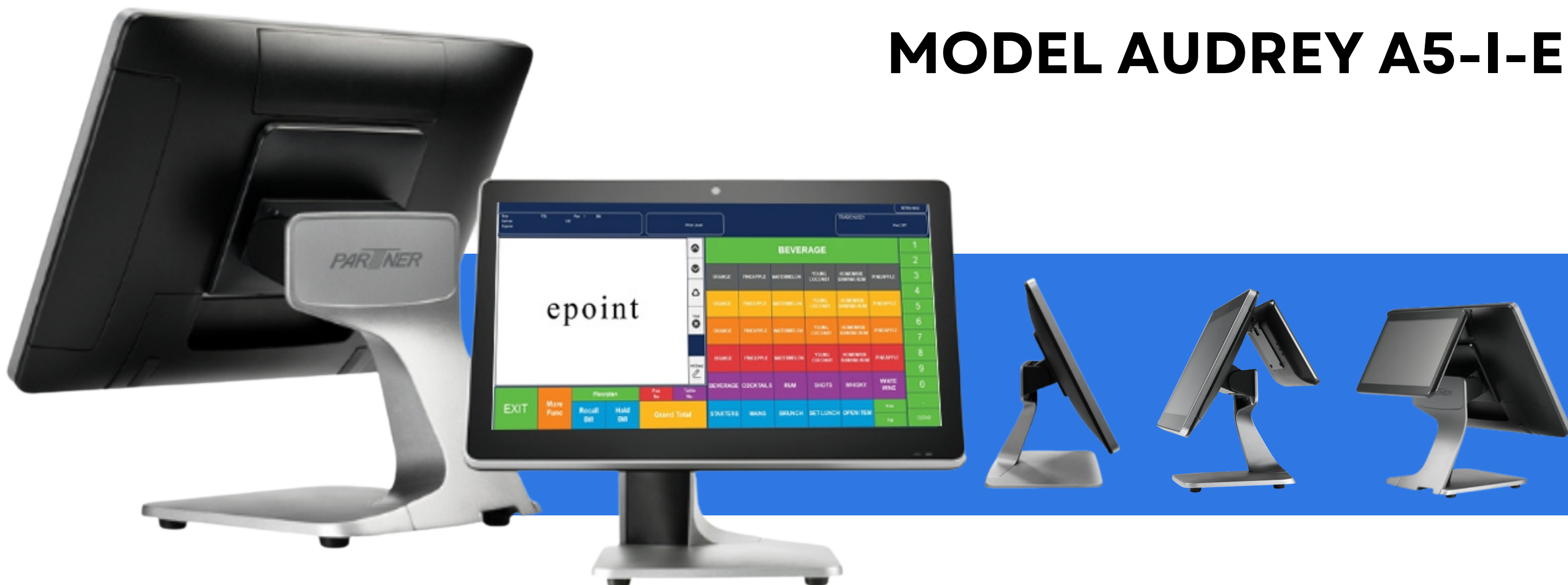
+65 6100 6300  
[www.epoint.com.sg](http://www.epoint.com.sg)  
[sales@epointpos.com](mailto:sales@epointpos.com)



**EPOINT SYSTEMS**

# POS SYSTEM

## MODEL AUDREY A5-I-E



### SPECIFICATIONS

### CONNECTIVITY

<b>Processor</b>	Intel Celeron J6412 (Elkhart Lake)
<b>System Memory</b>	2 x 260 pin DDR4 SO-DIMM-2133 Vertical Type, 8GB RAM
<b>Storage Device</b>	M.2 PCIE SSD, 128GB
<b>Display</b>	15.6", Resolution 1366 x 768
<b>Touch</b>	15.6" Pcap Touch
<b>Supported OS</b>	Windows 10 O.S. Compliant

<b>Power Supply</b>	AC-In 100~240V / DC-Out 12V,180W
<b>I/O Interface</b>	2 x Serial ports, RS232 (RJ45) 2 x LAN 1 x RJ11 Port 1 x DC+12V out 1 x DC +12V Input Power-Jack 1 x Audio (1 * Line-out) 4 x USB Type-A ports (USB3.0/2.0) 1 x HDMI Port 1 x VGA

**WE MAKE IT POSSIBLE !!!**



+65 6100 6300  
www.epoint.com.sg  
sales@epointpos.com